

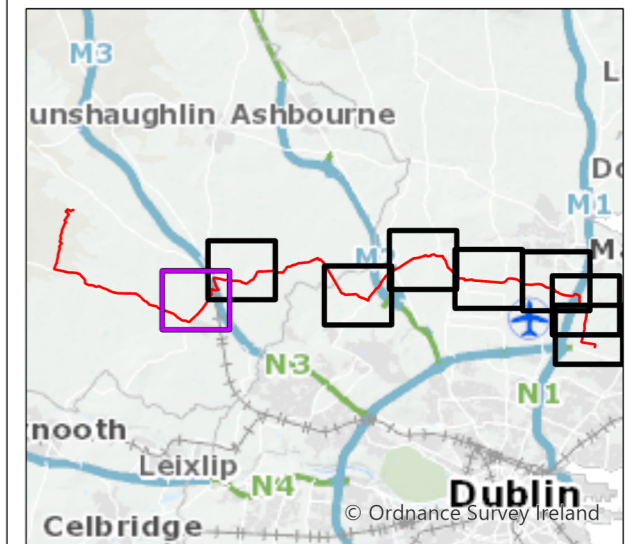
Figure 11.7

Legend

- Chainage
- - - Proposed Cable Route
- ▭ Planning Application Boundary (PAB)
- ▨ HDD Compound
- ▨ Temporary Construction Compound
- - - Study Area (250m Buffer)

Granular Aggregate Potential

- ▭ Very High potential
- ▭ High potential
- ▭ Moderate potential
- ▭ Low potential



0	Feb 2024	Final	SMD	PB	PB	GS
Rev.	Date	Purpose of revision	Drawn	Check'd	Rev'd	Appr'd

Jacobs



Client
Project
East Meath - North Dublin Grid Upgrade

Drawing Title
Figure 11.7 - Granular Aggregate Potential (Sheet 1 of 8)

Drawing Status
Final

Scale @ A3
1:10,000 DO NOT SCALE

OSI Sheet No.

Jacobs No. 3321084AJ

Drawing No. 321084AJ-JAC-ZZ-XX-DR-G-0352

© Copyright 2024 Jacobs U.K. Limited. The concepts and information contained in this document are the property of Jacobs. Use or copying of this document in whole or in part without the written permission of Jacobs constitutes an infringement of copyright. Limitation: This drawing has been prepared on behalf of, and for the exclusive use of Jacobs' Client, and is subject to, and issued in accordance with, the provisions of the contract between Jacobs and the Client. Jacobs accepts no liability or responsibility whatsoever for, or in respect of, any use of, or reliance upon, this drawing by any third party.

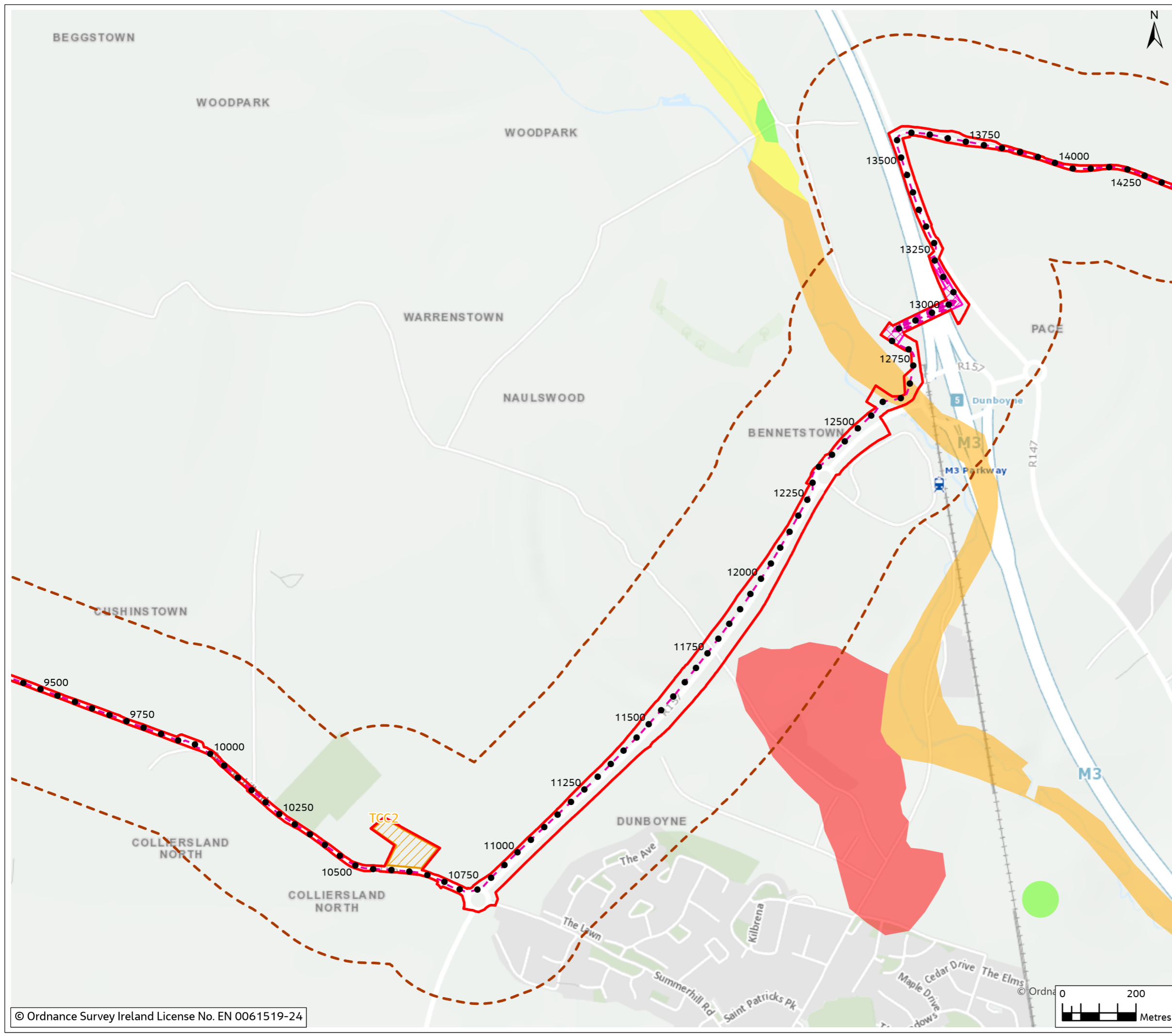
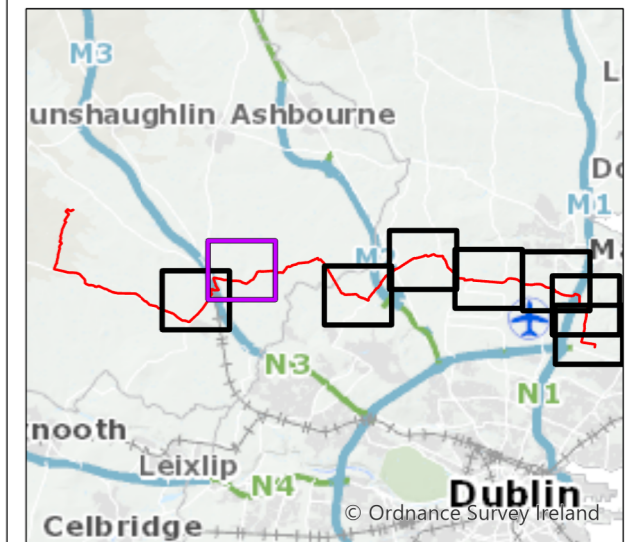
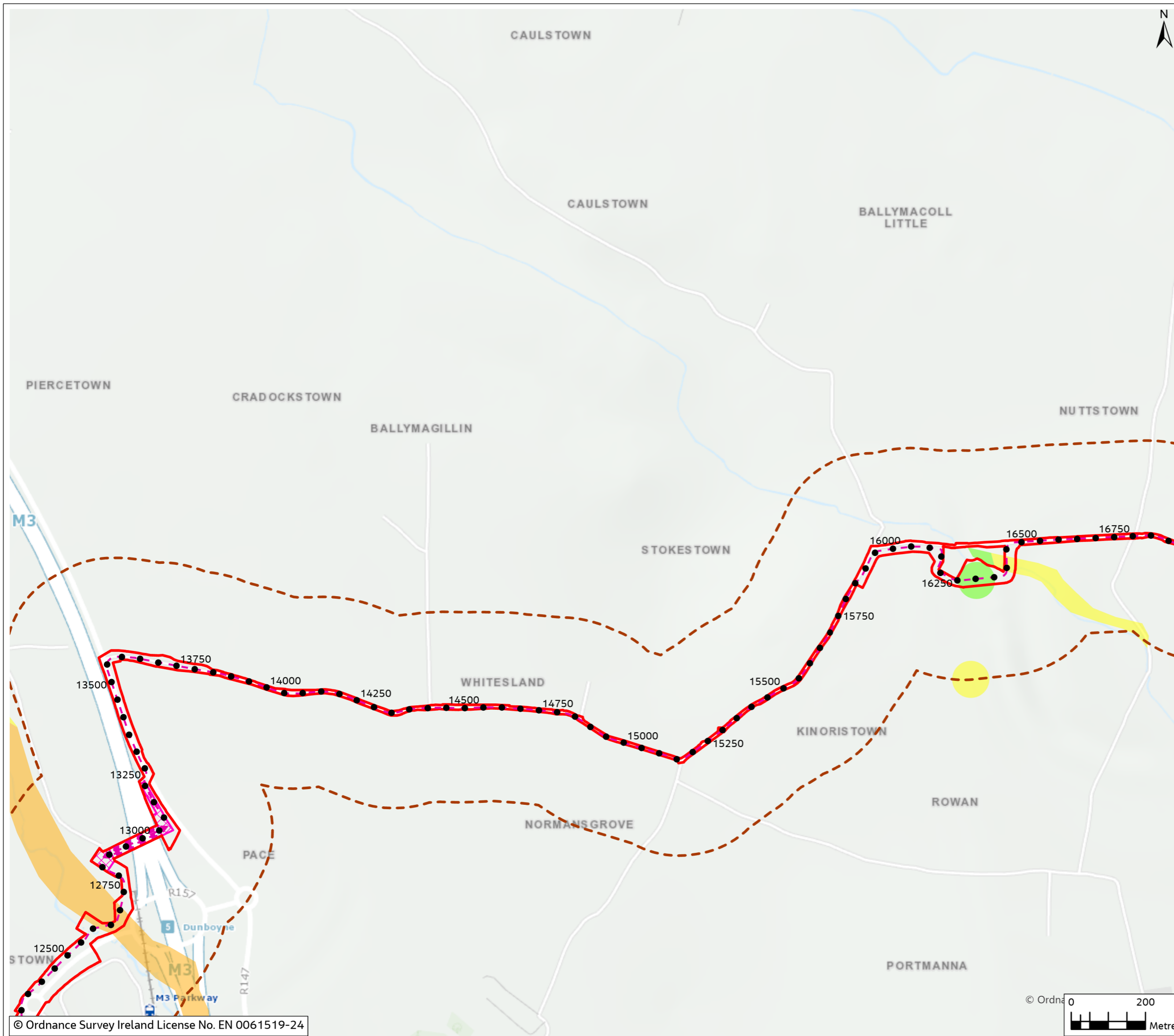


Figure 11.7

Legend

- Chainage
 - - - Proposed Cable Route
 - ▭ Planning Application Boundary (PAB)
 - ⊠ HDD Compound
 - - - Study Area (250m Buffer)
- Granular Aggregate Potential**
- High potential
 - Moderate potential
 - Low potential



0	Feb 2024	Final	SMD	PB	PB	GS
Rev.	Date	Purpose of revision	Drawn	Check'd	Rev'd	Appr'd

Jacobs

Client

Project
 East Meath - North Dublin Grid Upgrade

Drawing Title
 Figure 11.7 - Granular Aggregate Potential (Sheet 2 of 8)

Drawing Status
 Final

Scale @ A3
 1:10,000 DO NOT SCALE

OSI Sheet No.

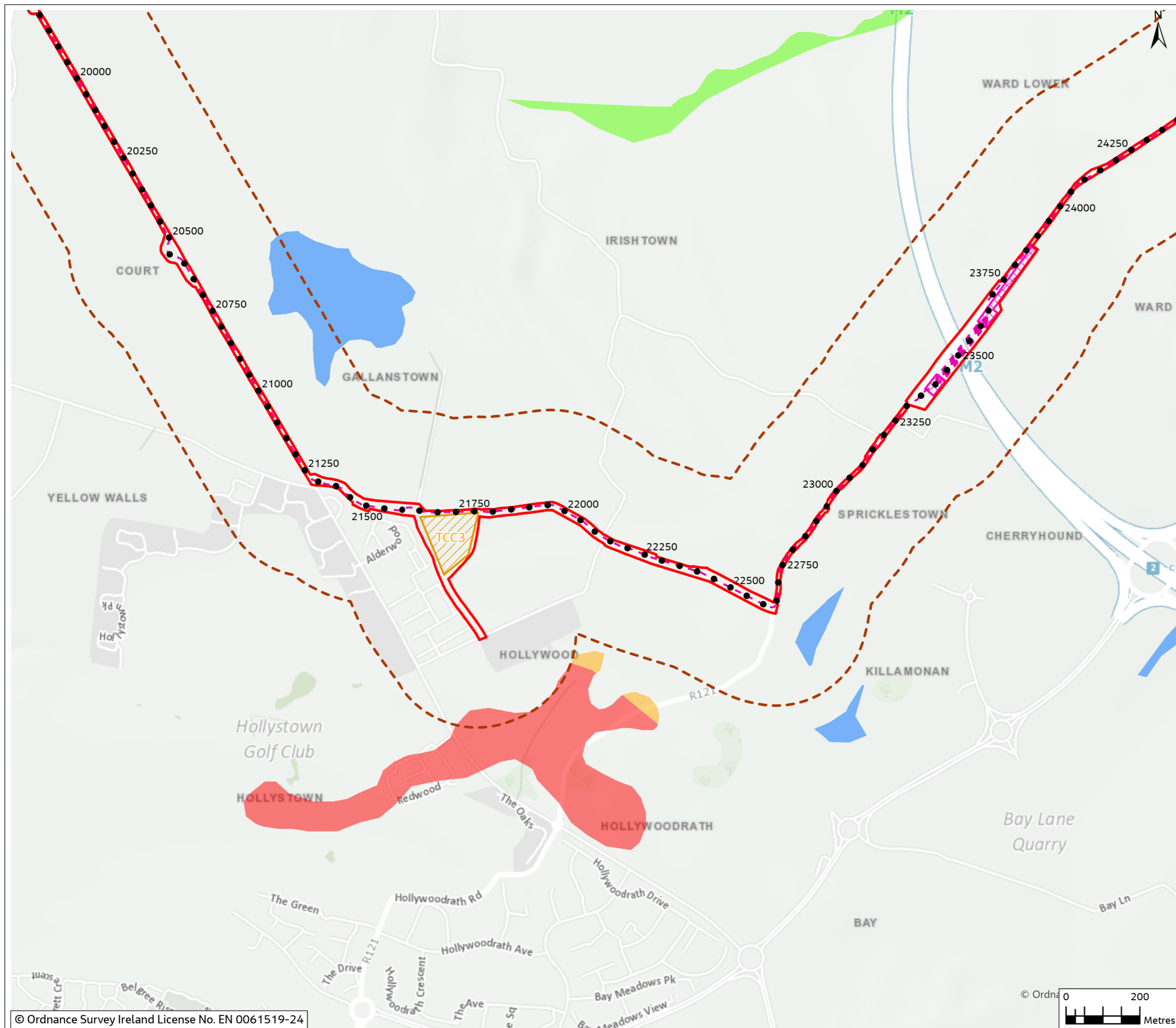
Jacobs No.
 3321084AJ

Drawing No.
 321084AJ-JAC-ZZ-XX-DR-G-0353

© Copyright 2024 Jacobs U.K. Limited. The concepts and information contained in this document are the property of Jacobs. Use or copying of this document in whole or in part without the written permission of Jacobs constitutes an infringement of copyright. Limitation: This drawing has been prepared on behalf of, and for the exclusive use of Jacobs' Client, and is subject to, and issued in accordance with, the provisions of the contract between Jacobs and the Client. Jacobs accepts no liability or responsibility whatsoever for, or in respect of, any use of, or reliance upon, this drawing by any third party.



Figure 11.7

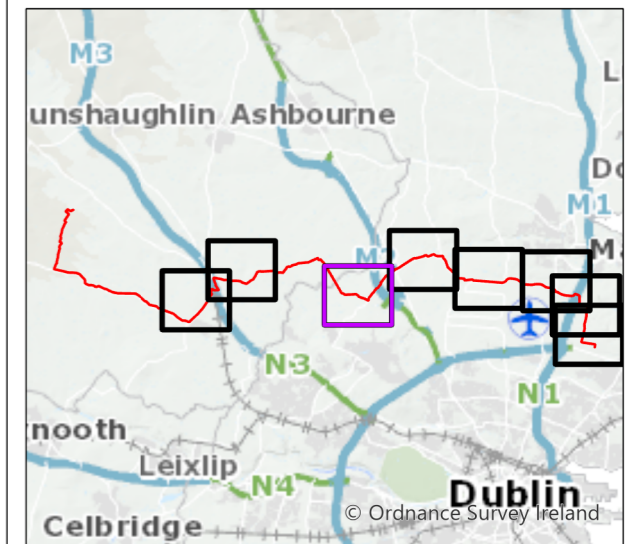


Legend

- Chainage
- - - Proposed Cable Route
- ▭ Planning Application Boundary (PAB)
- ▭ HDD Compound
- ▭ Temporary Construction Compound
- - - Study Area (250m Buffer)

Granular Aggregate Potential

- ▭ Very High potential
- ▭ High potential
- ▭ Low potential
- ▭ Very Low potential



0	Feb 2024	Final	SMD	PB	PB	GS
Rev.	Date	Purpose of revision	Drawn	Check'd	Rev'd	Appr'd

Jacobs

Client
EirGrid

Project
East Meath - North Dublin Grid Upgrade

Drawing Title
Figure 11.7 - Granular Aggregate Potential
(Sheet 3 of 8)

Drawing Status
Final

Scale @ A3
1:10,000 DO NOT SCALE

OSI Sheet No.

Jacobs No. 3321084AJ

Drawing No. 321084AJ-JAC-ZZ-XX-DR-G-0354

© Copyright 2024 Jacobs U.K. Limited. The concepts and information contained in this document are the property of Jacobs. Use or copying of this document in whole or in part without the written permission of Jacobs constitutes an infringement of copyright. Limitation: This drawing has been prepared on behalf of, and for the exclusive use of Jacobs' Client, and is subject to, and issued in accordance with, the provisions of the contract between Jacobs and the Client. Jacobs accepts no liability or responsibility whatsoever for, or in respect of, any use of, or reliance upon, this drawing by any third party.

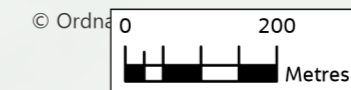
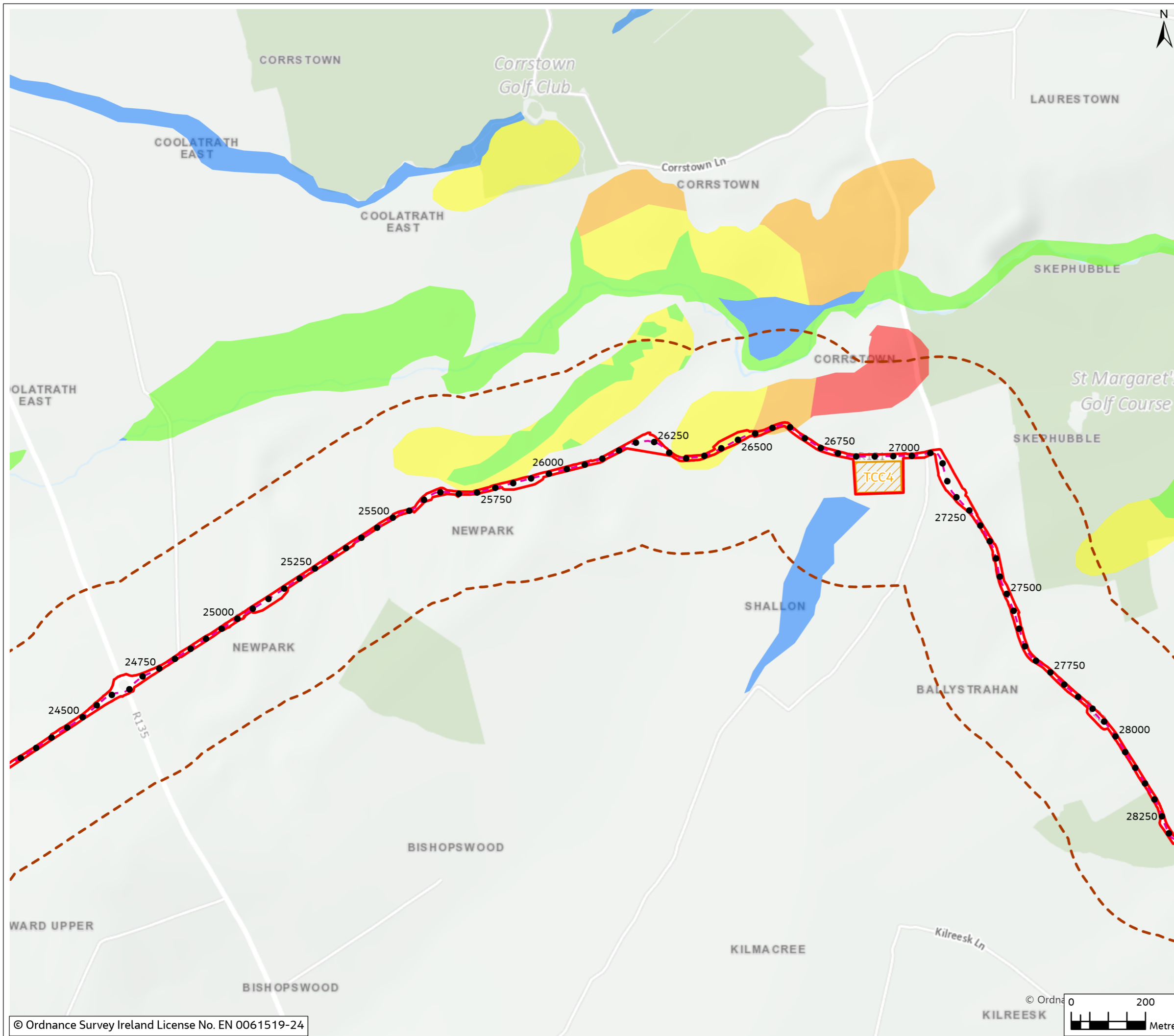


Figure 11.7

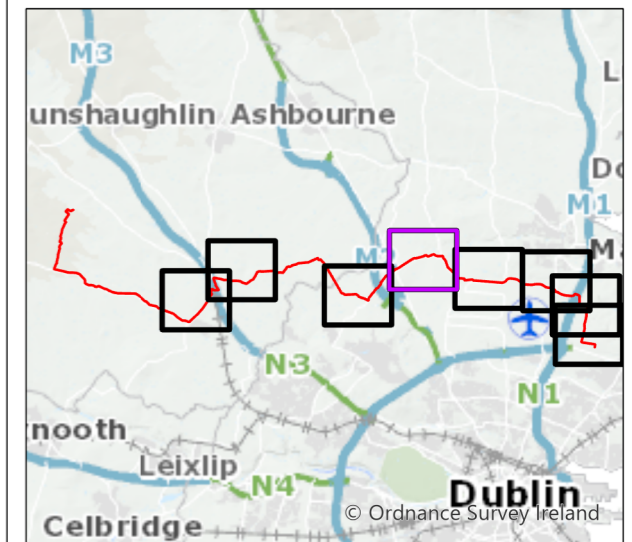


Legend

- Chainage
- - - Proposed Cable Route
- ▭ Planning Application Boundary (PAB)
- ▨ Temporary Construction Compound
- - - Study Area (250m Buffer)

Granular Aggregate Potential

- ▭ Very High potential
- ▭ High potential
- ▭ Moderate potential
- ▭ Low potential
- ▭ Very Low potential



0	Feb 2024	Final	SMD	PB	PB	GS
Rev.	Date	Purpose of revision	Drawn	Check'd	Rev'd	Appr'd

Jacobs

Client

Project
 East Meath - North Dublin Grid Upgrade

Drawing Title
 Figure 11.7 - Granular Aggregate Potential (Sheet 4 of 8)

Drawing Status
 Final

Scale @ A3
 1:10,000 DO NOT SCALE

OSI Sheet No.

Jacobs No. 3321084AJ

Drawing No. 321084AJ-JAC-ZZ-XX-DR-G-0355

© Copyright 2024 Jacobs U.K. Limited. The concepts and information contained in this document are the property of Jacobs. Use or copying of this document in whole or in part without the written permission of Jacobs constitutes an infringement of copyright. Limitation: This drawing has been prepared on behalf of, and for the exclusive use of Jacobs' Client, and is subject to, and issued in accordance with, the provisions of the contract between Jacobs and the Client. Jacobs accepts no liability or responsibility whatsoever for, or in respect of, any use of, or reliance upon, this drawing by any third party.

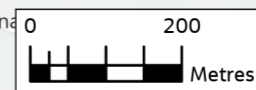
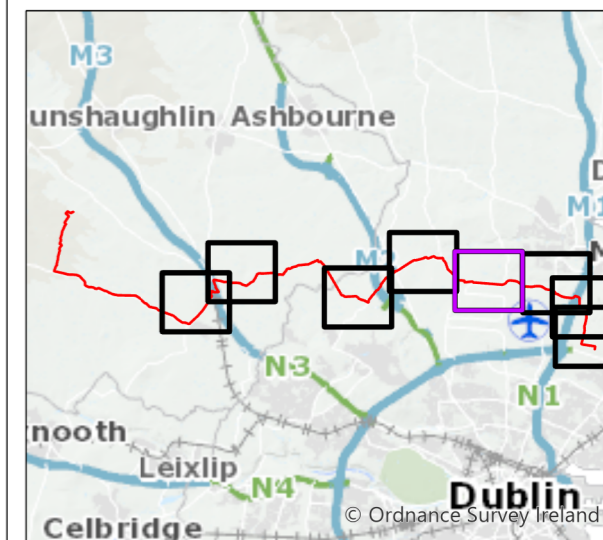


Figure 11.7

Legend

- Chainage
 - - - Proposed Cable Route
 - ▭ Planning Application Boundary (PAB)
 - - - Study Area (250m Buffer)
- Granular Aggregate Potential**
- Very High potential
 - High potential
 - Moderate potential
 - Low potential
 - Very Low potential



0	Feb 2024	Final	SMD	PB	PB	GS
Rev.	Date	Purpose of revision	Drawn	Check'd	Rev'd	Appr'd

Jacobs



Client
East Meath - North Dublin Grid Upgrade

Drawing Title
Figure 11.7 - Granular Aggregate Potential (Sheet 5 of 8)

Drawing Status: Final

Scale @ A3: 1:10,000 DO NOT SCALE

OSI Sheet No.

Jacobs No. 3321084AJ

Drawing No. 321084AJ-JAC-ZZ-XX-DR-G-0356

© Copyright 2024 Jacobs U.K. Limited. The concepts and information contained in this document are the property of Jacobs. Use or copying of this document in whole or in part without the written permission of Jacobs constitutes an infringement of copyright. Limitation: This drawing has been prepared on behalf of, and for the exclusive use of Jacobs' Client, and is subject to, and issued in accordance with, the provisions of the contract between Jacobs and the Client. Jacobs accepts no liability or responsibility whatsoever for, or in respect of, any use of, or reliance upon, this drawing by any third party.

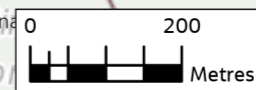
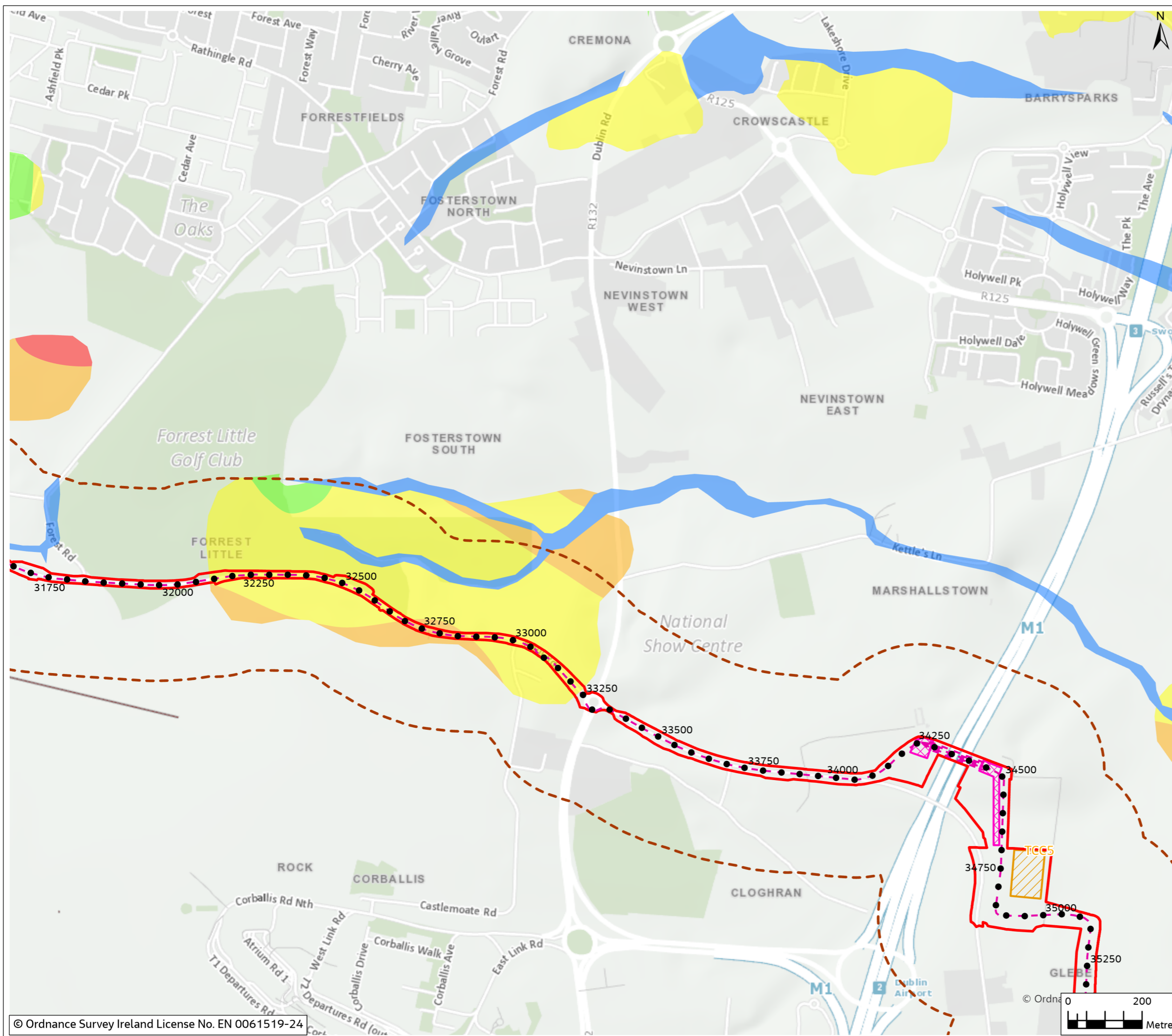
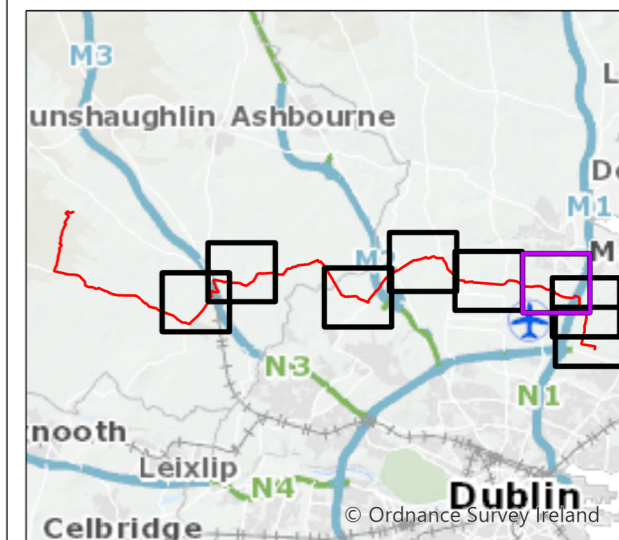


Figure 11.7



- Legend**
- Chainage
 - - - Proposed Cable Route
 - ▭ Planning Application Boundary (PAB)
 - ▨ HDD Compound
 - ▨ Temporary Construction Compound
 - - - Study Area (250m Buffer)
- Granular Aggregate Potential**
- Very High potential
 - High potential
 - Moderate potential
 - Low potential
 - Very Low potential



0	Feb 2024	Final	SMD	PB	PB	GS
Rev.	Date	Purpose of revision	Drawn	Check'd	Rev'd	Appr'd

Jacobs



Client
Project
East Meath - North Dublin Grid Upgrade

Drawing Title
Figure 11.7 - Granular Aggregate Potential (Sheet 6 of 8)

Drawing Status
Final

Scale @ A3
1:10,000 DO NOT SCALE

OSI Sheet No.

Jacobs No. 8321084AJ

Drawing No. 321084AJ-JAC-ZZ-XX-DR-G-0357

© Copyright 2024 Jacobs U.K. Limited. The concepts and information contained in this document are the property of Jacobs. Use or copying of this document in whole or in part without the written permission of Jacobs constitutes an infringement of copyright. Limitation: This drawing has been prepared on behalf of, and for the exclusive use of Jacobs' Client, and is subject to, and issued in accordance with, the provisions of the contract between Jacobs and the Client. Jacobs accepts no liability or responsibility whatsoever for, or in respect of, any use of, or reliance upon, this drawing by any third party.

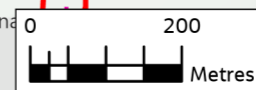


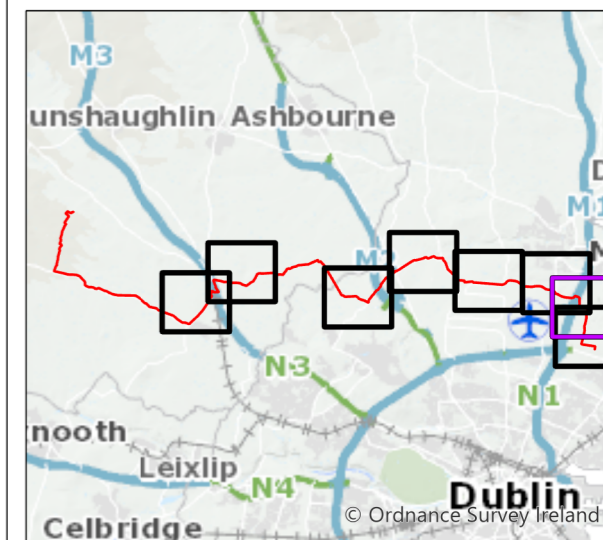
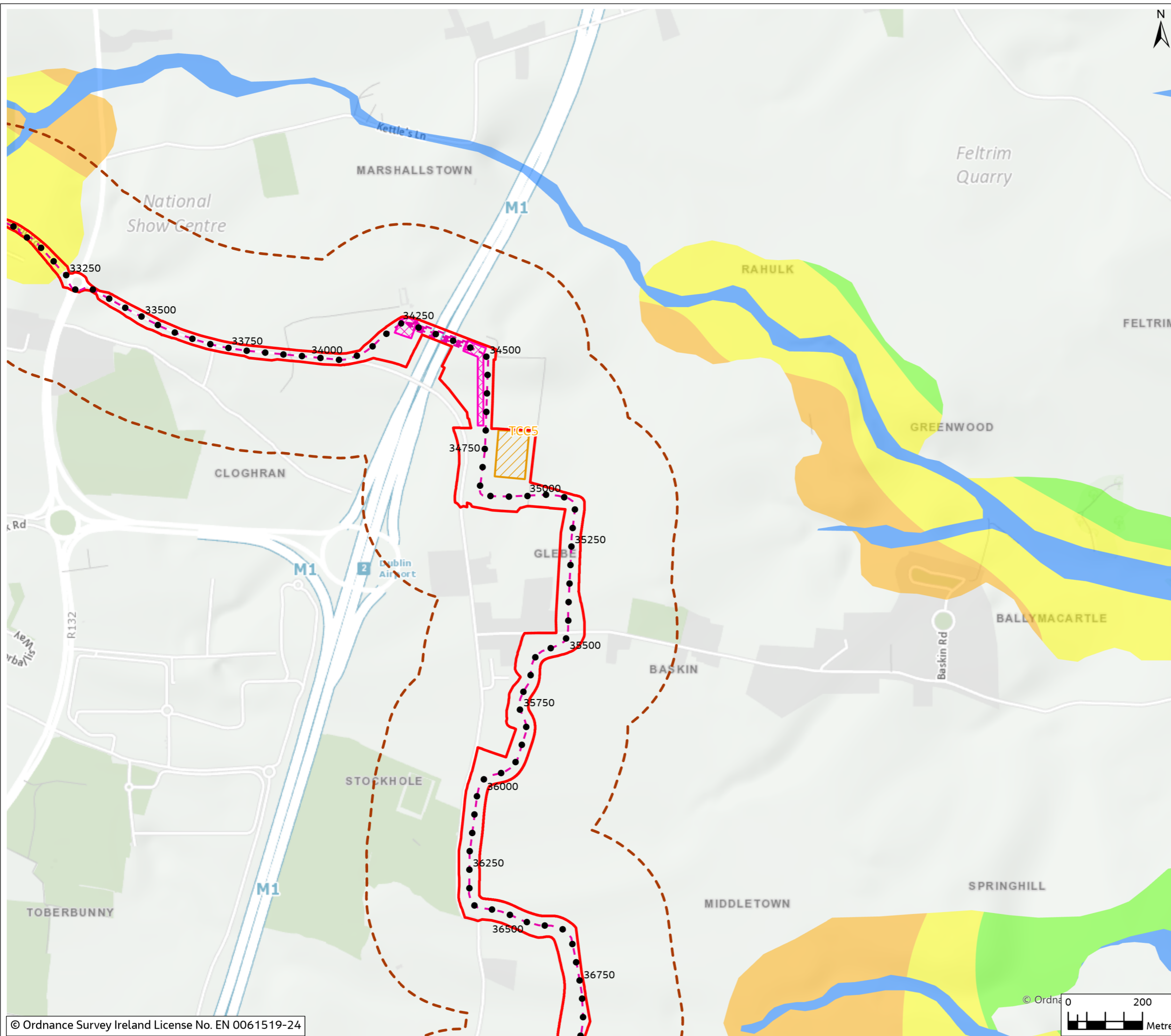
Figure 11.7

Legend

- Chainage
- - - Proposed Cable Route
- ▭ Planning Application Boundary (PAB)
- ⊠ HDD Compound
- ▨ Temporary Construction Compound
- - - Study Area (250m Buffer)

Granular Aggregate Potential

- High potential
- Moderate potential
- Low potential
- Very Low potential



0	Feb 2024	Final	SMD	PB	PB	GS
Rev.	Date	Purpose of revision	Drawn	Check'd	Rev'd	Appr'd

Jacobs



Client
Project
East Meath - North Dublin Grid Upgrade

Drawing Title
Figure 11.7 - Granular Aggregate Potential (Sheet 7 of 8)

Drawing Status
Final

Scale @ A3
1:10,000 DO NOT SCALE

OSI Sheet No.

Jacobs No. 3321084AJ

Drawing No. 321084AJ-JAC-ZZ-XX-DR-G-0358

© Copyright 2024 Jacobs U.K. Limited. The concepts and information contained in this document are the property of Jacobs. Use or copying of this document in whole or in part without the written permission of Jacobs constitutes an infringement of copyright. Limitation: This drawing has been prepared on behalf of, and for the exclusive use of Jacobs' Client, and is subject to, and issued in accordance with, the provisions of the contract between Jacobs and the Client. Jacobs accepts no liability or responsibility whatsoever for, or in respect of, any use of, or reliance upon, this drawing by any third party.



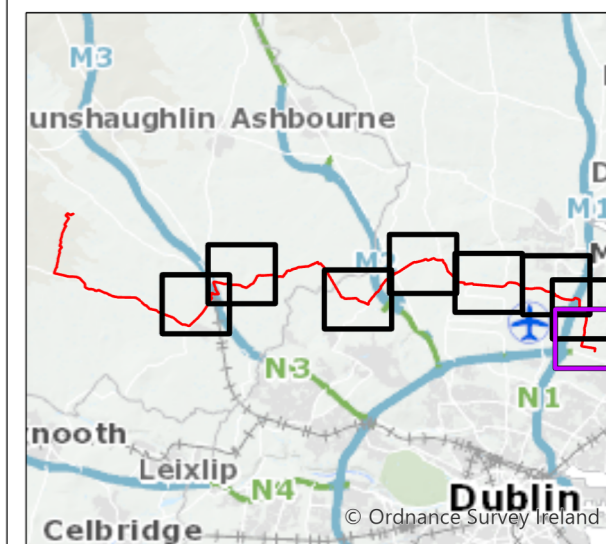
Figure 11.7

Legend

- Chainage
- - - Proposed Cable Route
- ▭ Planning Application Boundary (PAB)
- ▨ Temporary Construction Compound
- ▭ Substation Footprint
- - - Study Area (250m Buffer)

Granular Aggregate Potential

- High potential
- Moderate potential
- Low potential
- Very Low potential



0	Feb 2024	Final	SMD	PB	PB	GS
Rev.	Date	Purpose of revision	Drawn	Check'd	Rev'd	Appr'd

Jacobs



Client
Project
East Meath - North Dublin Grid Upgrade

Drawing Title
Figure 11.7 - Granular Aggregate Potential (Sheet 8 of 8)

Drawing Status
Final

Scale @ A3
1:10,000 DO NOT SCALE

OSI Sheet No.
Jacobs No. 3321084AJ

Drawing No. 321084AJ-JAC-ZZ-XX-DR-G-0359

© Copyright 2024 Jacobs U.K. Limited. The concepts and information contained in this document are the property of Jacobs. Use or copying of this document in whole or in part without the written permission of Jacobs constitutes an infringement of copyright. Limitation: This drawing has been prepared on behalf of, and for the exclusive use of Jacobs' Client, and is subject to, and issued in accordance with, the provisions of the contract between Jacobs and the Client. Jacobs accepts no liability or responsibility whatsoever for, or in respect of, any use of, or reliance upon, this drawing by any third party.

